

FEATURES AND SPECIFICATIONS

Features and Benefits

- Intermateable, intermountable and interchangeable with industry-standard versions
- Cross tested to assure industry compatibility
- Positive locks
- Fully isolated contacts

Reference Information

Product Specification: PS-42022-0001
 Packaging: Bag
 UL File No.: E29179
 CSA File No.: LR19980
 Designed In: Inches

Electrical

Voltage: 600V*
 Current: 13.5A*
 Contact Resistance: 3.5mΩ max.
 Dielectric Withstanding Voltage: 2900V
 Insulation Resistance: 1000 MΩ min.

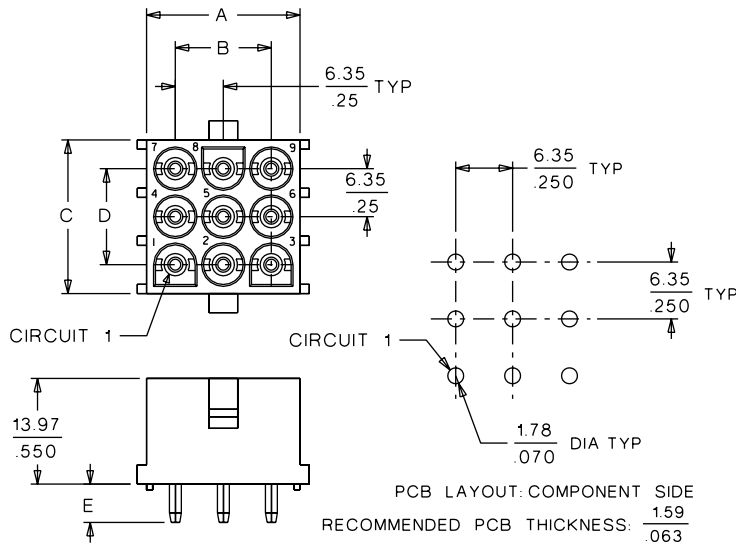
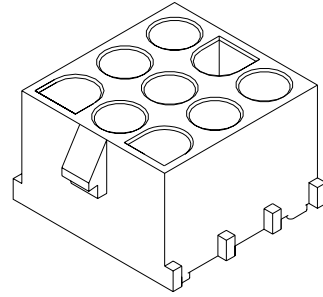
Physical

Header Housing: Polyester, UL 94V-0
 Header Contact: Brass or Phosphor Bronze
 Plating: Tin or Gold
 Temperature: -55 to +105°C

molex® 2.13mm (.084") Diameter MLX Power Connector Header

42002

Vertical



ORDERING INFORMATION AND DIMENSIONS

Circuits	Order No.								Housing	Dimension				
	White				Brick Red					A	B	C	D	E
	Tin		Select Gold		Tin		Select Gold							
	Male	Female	Male	Female	Male	Female	Male	Female						
2	• 10-84-4020	• 10-84-4022	• 10-84-4024	• 10-84-4026					94V-2	7.62 (.300)		13.97 (.550)	6.35 (.250)	4.30 (.170)
	10-84-5020	10-84-5021	10-84-5022	10-84-5023										
3	• 10-84-4030	• 10-84-4032	• 10-84-4034	• 10-84-4036					94V-2	7.62 (.300)		20.32 (.800)	12.70 (.500)	4.30 (.170)
	10-84-5030	10-84-5031	10-84-5032	10-84-5033										
4	• 10-84-4040	• 10-84-4042	• 10-84-4044	• 10-84-4046					94V-2	7.62 (.300)		26.67 (1.050)	19.05 (.750)	4.30 (.170)
	10-84-5040	10-84-5041	10-84-5042	10-84-5043										
6	• 10-84-4060	• 10-84-4062	• 10-84-4064	• 10-84-4066					94V-2	20.32 (.800)	12.70 (.500)	13.97 (.550)	6.35 (.250)	4.30 (.170)
	10-84-5060	10-84-5061	10-84-5062	10-84-5063										
9	• 10-84-4090	• 10-84-4092	• 10-84-4094	• 10-84-4096					94V-2	20.32 (.800)	12.70 (.500)	20.32 (.800)	12.70 (.500)	4.30 (.170)
	10-84-5090	10-84-5091	10-84-5092	10-84-5093										
12	• 10-84-4120	• 10-84-4122	• 10-84-4124	• 10-84-4126					94V-2	20.32 (.800)	12.70 (.500)	26.67 (1.050)	19.05 (.750)	4.30 (.170)
	10-84-5120	10-84-5121	10-84-5122	10-84-5123										
15	• 10-84-4150	• 10-84-4152	• 10-84-4154	• 10-84-4156					94V-2	20.32 (.800)	12.70 (.500)	33.02 (1.300)	25.40 (1.000)	4.30 (.170)
	10-84-5150	10-84-5151	10-84-5152	10-84-5153										

* US Standard Product, available through Molex franchised distributors

* Ratings are per circuit, based on fully loaded housings